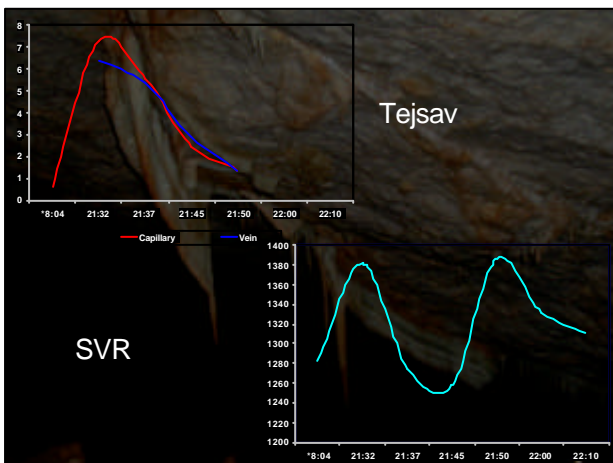
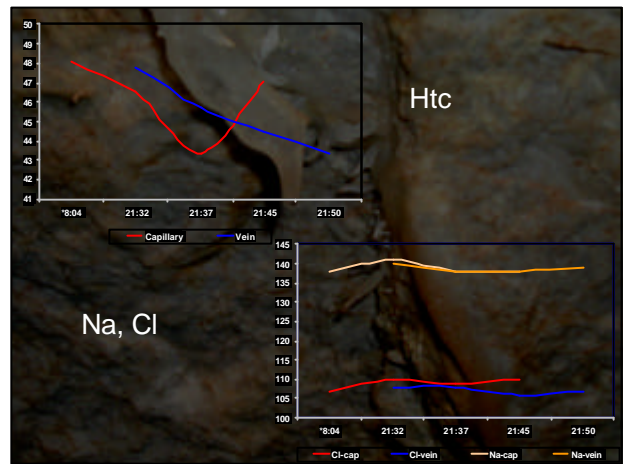
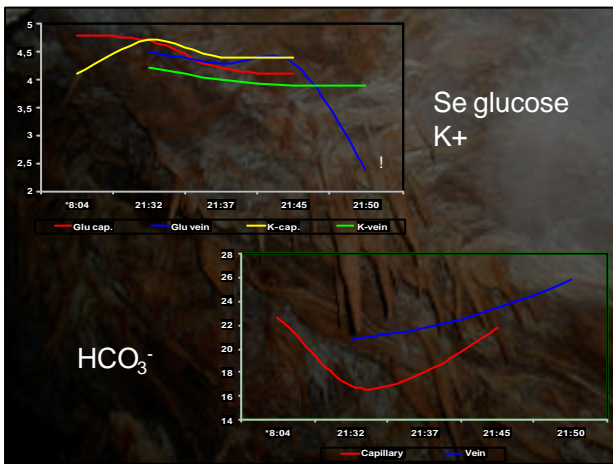
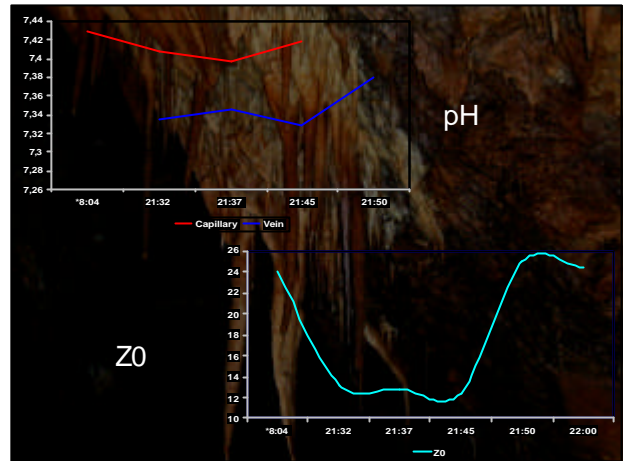
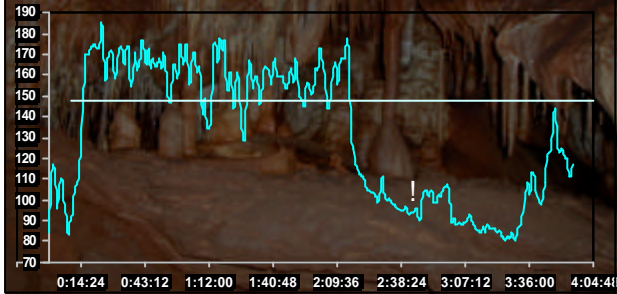


**In 1998 special investigation:**

Exhausting in cool environment.

Theory: Hard work in cool environment causes Ion changes and it can cause a death.

Plan: 1 (max. 2) person runs over the cave Baradla and back. On becoming whole blood gas analysis, ions (K,Na) ICG.



**Results of exhaust assessment :**

- We founded nearly the same changes, we waited after the extra load. But the Z0 change was too high.
- After the 5 minutes rest, a bit movement caused big changes in K+, pH and glucose levels, which can cause the dead of person.
- Neural alarm signs switched off by stress reaction (higher catecholamines and endorphine levels).

